

# Crime-lite<sup>®</sup> 2

**a new and improved range of forensic light sources**

- Higher intensity
- Constant light output
- Eight wavelengths including UV
- Uniform beam
- Extended run time
- Rugged and splash proof
- Battery discharge protection



foster+freeman

# Crime-lite<sup>®</sup> 2

**Making crime scene investigation even more effective**

## Extended range

The new **Crime-lite 2** range includes a broad band, white light model for general search and seven narrow bandwidth LED light sources, providing intense illumination in the UV, violet, blue, blue/green, green, orange and red for detecting blood, body fluids, grease, chemical stains, hair, fibres and stained latent fingerprints.

## Added features

A new, more efficient battery system gives the **Crime-lite 2** a longer operating time per charge and features deep discharge battery protection and a low battery charge indicator. The battery recharger can be plugged into a 12V vehicle power socket or into a 110 or 230VAC source and as back-up, the **Crime-lite 2** will also function using two D cells.

## Improved design

Constant light output throughout battery charge, uniform, shadow-free illumination and a clip-on magnifier enhance the visibility of evidence. A rugged, splash proof housing, improved anti-roll design, cooler running temperature and a tripod mounting bracket for photography improve the usability. LED lamp life of up to 50,000 hours reduces maintenance costs.



## Standard Crime-lite<sup>®</sup> 2 cased sets

### 8 Crime-lite<sup>®</sup> 2 set



Product code: **QCL2/8KIT/G**

#### Light Sources

UV (with protective goggles)	(QCL2/008)
VIOLET	(QCL2/001)
BLUE	(QCL2/002)
BLUE/GREEN	(QCL2/004)
GREEN	(QCL2/005)
ORANGE	(QCL2/006)
RED	(QCL2/007)
WHITE	(QCL2/WHITE)

#### Camera Filters

PALE YELLOW 435nm	(QCL/66)
YELLOW 476nm	(QCL/67)
ORANGE 529nm	(QCL/68)
ORANGE RED 571nm	(QCL2/115)
CLEAR (UV FILTER) 408nm	(QCL2/118)
CAMERA FILTER POUCH	(QCL2/012)

#### Viewing Goggles

PALE YELLOW 435nm	(QCL/16)
YELLOW 476nm	(QCL/17)
ORANGE 529nm	(QCL/18)
ORANGE RED 571nm	(QCL2/117)

#### Accessories

MAGNIFIER	(QCL/05)
STEP UP RING 52mm - 62mm	(QCL/108)
SPARE BATTERIES x 3	(QCL/13A)
BATTERY CHARGER	(QCL/06)
SCENE OF CRIME CASE - LARGE	(QCL2/011)
MANUAL & APPLICATION GUIDE	(QCL2/MANSTD)



# Standard Crime-lite<sup>®</sup>2 cased sets

## 5 Crime-lite<sup>®</sup>2 set



Product code: **QCL2/5KIT/G**

### Light Sources

VIOLET	(QCL2/001)
BLUE	(QCL2/002)
BLUE/GREEN	(QCL2/004)
GREEN	(QCL2/005)
WHITE	(QCL2/WHITE)

### Camera Filters

PALE YELLOW 435nm	(QCL/66)
YELLOW 476nm	(QCL/67)
ORANGE 529nm	(QCL/68)
ORANGE RED 571nm	(QCL2/115)
CAMERA FILTER POUCH	(QCL2/012)

### Viewing Goggles

PALE YELLOW 435nm	(QCL/16)
YELLOW 476nm	(QCL/17)
ORANGE 529nm	(QCL/18)
ORANGE RED 571nm	(QCL2/117)

### Accessories

MAGNIFIER	(QCL/05)
STEP UP RING 52mm - 62mm	(QCL/108)
SPARE BATTERIES x 3	(QCL/13A)
BATTERY CHARGER	(QCL/06)
SCENE OF CRIME CASE - LARGE	(QCL2/011)
MANUAL & APPLICATION GUIDE	(QCL2/MANSTD)

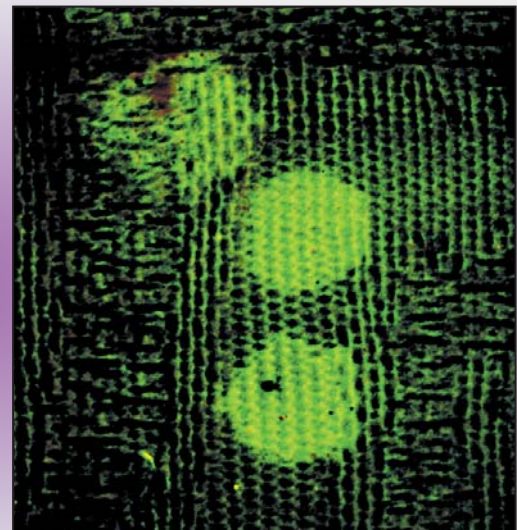


## Body fluids

Semen stains on fabric illuminated with the violet Crime-lite<sup>2</sup> photographed through a 435nm filter.



A sample of body fluid viewed under white light.



A sample fluorescing under violet light.

## 4 Crime-lite<sup>®</sup>2 set



Product code: **QCL2/4KIT/G**

### Light Sources

UV (with protective goggles)	(QCL2/008)
BLUE	(QCL2/002)
GREEN	(QCL2/005)
WHITE	(QCL2/WHITE)

### Camera Filters

YELLOW 476nm	(QCL/67)
ORANGE RED 571nm	(QCL2/115)
CLEAR (UV FILTER) 408nm	(QCL2/118)

### Viewing Goggles

YELLOW 476nm	(QCL/17)
ORANGE RED 571nm	(QCL2/117)

### Accessories

MAGNIFIER	(QCL/05)
STEP UP RING 52mm - 62mm	(QCL/108)
SPARE BATTERIES x 2	(QCL/13A)
BATTERY CHARGER	(QCL/06)
SCENE OF CRIME CASE - LARGE	(QCL2/011)
MANUAL & APPLICATION GUIDE	(QCL2/MANSTD)



# Standard Crime-lite®2 cased sets

## 3 Crime-lite®2 set ● ● ○

Product code: **QCL2/3KIT/G**

### Light Sources

UV (with protective goggles) (QCL2/008)  
 BLUE (QCL2/002)  
 WHITE (QCL2/WHITE)

### Camera Filters

YELLOW 476nm (QCL/67)  
 CLEAR (UV FILTER) 408nm (QCL2/118)

### Viewing Goggles

YELLOW 476nm (QCL/17)

### Accessories

MAGNIFIER (QCL/05)  
 STEP UP RING 52mm - 62mm (QCL/108)  
 SPARE BATTERY (QCL/13A)  
 BATTERY CHARGER (QCL/06)  
 SCENE OF CRIME CASE - SMALL (QCL2/013)  
 MANUAL & APPLICATION GUIDE (QCL2/MANSTD)



## 2 Crime-lite®2 set ● ○

Product code: **QCL2/2KUVW/G**

### Light Sources

UV (with protective goggles) (QCL2/008)  
 WHITE (QCL2/WHITE)

### Camera Filters

CLEAR (UV FILTER) 408nm (QCL2/118)

### Accessories

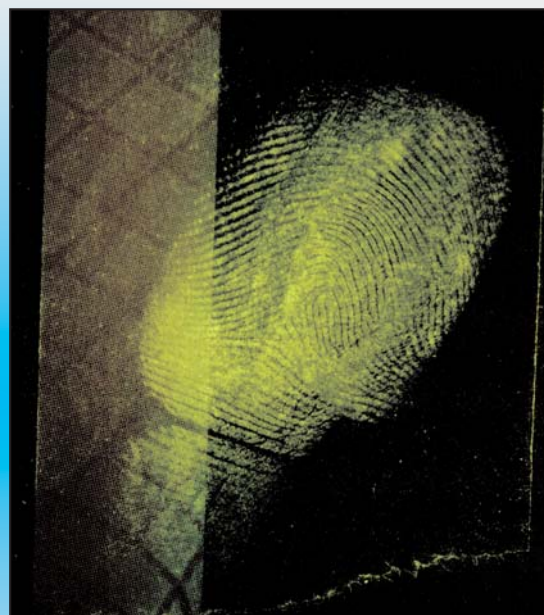
MAGNIFIER (QCL/05)  
 STEP UP RING 52mm - 62mm (QCL/108)  
 SPARE BATTERY (QCL/13A)  
 BATTERY CHARGER (QCL/06)  
 SCENE OF CRIME CASE - SMALL (QCL2/013)  
 MANUAL & APPLICATION GUIDE (QCL2/MANSTD)



## Fingerprints

Latent print on glossy magazine cover dusted with Blitz green fluorescent magna powder illuminated with the blue **Crime-lite 2** and photographed with the 476nm filter

*Dusted fingerprint viewed under white light.*



*A sample fluorescing under blue light.*

# Standard Crime-lite®2 cased sets

## 2 Crime-lite®2 set



Product code: **QCL2/2KBG/G**

### Light Sources

BLUE (QCL2/002)  
GREEN (QCL2/005)

### Camera Filters

YELLOW 476nm (QCL/67)  
ORANGE RED 571nm (QCL2/115)

### Viewing Goggles

YELLOW 476nm (QCL/17)  
ORANGE RED 571nm (QCL2/117)

### Accessories

MAGNIFIER (QCL/05)  
STEP UP RING 52mm - 62mm (QCL/108)  
SPARE BATTERY (QCL/13A)  
BATTERY CHARGER (QCL/06)  
SCENE OF CRIME CASE - SMALL (QCL2/013)  
MANUAL & APPLICATION GUIDE (QCL2/MANSTD)



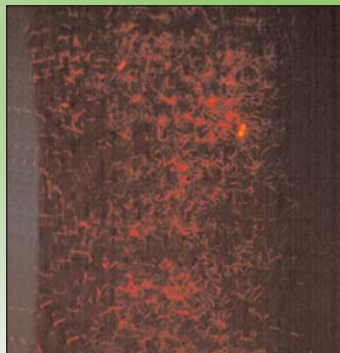
## Fibres

Fluorescent fibres on a red fabric detected with the green **Crime-lite 2** photographed through 571nm camera filter.



*Fibres viewed under white light.*

*A sample fluorescing under green light.*



*A sample photographed and converted to black & white.*

## 2 Crime-lite®2 set



Product code: **QCL2/2KWB/G**

### Light Sources

BLUE (QCL2/002)  
WHITE (QCL2/WHITE)

### Camera Filters

YELLOW 476nm (QCL/67)

### Viewing Goggles

YELLOW 476nm (QCL/17)

### Accessories

MAGNIFIER (QCL/05)  
STEP UP RING 52mm - 62mm (QCL/108)  
SPARE BATTERY (QCL/13A)  
BATTERY CHARGER (QCL/06)  
SCENE OF CRIME CASE - SMALL (QCL2/013)  
MANUAL & APPLICATION GUIDE (QCL2/MANSTD)



# Crime-lite<sup>®</sup>2 light sources



## Crime-lite<sup>®</sup>2 Specifications

All light sources feature the following;

- ONE NON TOXIC NiMH RECHARGEABLE BATTERY, 7.2 V, 2.1 AH.
- RUN TIME ON FULL CHARGE IS BETWEEN 2 AND 4 HOURS, DEPENDING ON MODEL.
- FLAT BATTERY INDICATOR (NiMH BATTERY ONLY).
- 'D' CELL BATTERY COMPATIBLE - EXCLUDING UV MODEL (BATTERY NOT SUPPLIED).
- LED LIFE UP TO 50,000 HOURS.
- IP64 SPLASH PROOF/DUST TIGHT.
- WEIGHT: 460gms.
- DIAMETER 44mm, LENGTH 227mm.
- INFORMATION SHEET AND WAVELENGTH OUTPUT CERTIFICATE.
- SUPPLIED WITH WARNING SIGNS.
- COMPLIES WITH LED SAFETY STANDARD IEC 60825: 2001.

### Crime-lite<sup>®</sup>2 UV

Product code: QCL2/008

For the detection of fluorescent evidence. Includes one pair of protective UV safety glasses (fits over normal spectacles).

PEAK WAVELENGTH 365nm (NOMINAL)  
10% BAND WIDTH 350-380nm

### Crime-lite<sup>®</sup>2 Violet

Product code: QCL2/001

For the detection of blood stains and gunshot residues.

PEAK WAVELENGTH 410nm (nominal)  
10% BAND WIDTH 400-430nm

### Crime-lite<sup>®</sup>2 Blue

Product code: QCL2/002

For the detection of body fluid, fibres and stained fingerprints (BY40).

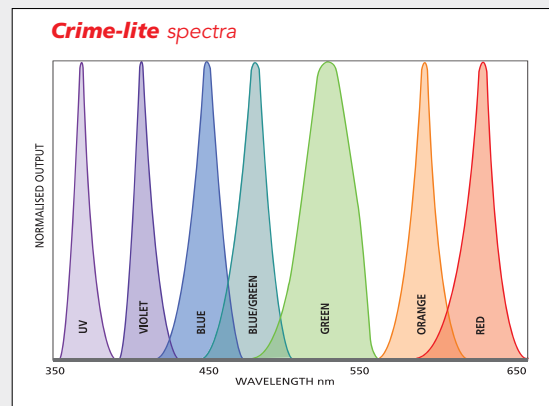
PEAK WAVELENGTH 445nm (nominal)  
10% BAND WIDTH 420-470nm

### Crime-lite<sup>®</sup>2 Blue/green

Product code: QCL2/004

For examining treated superglue fingerprints.

PEAK WAVELENGTH 480nm (nominal)  
10% BAND WIDTH 460-510nm



### Crime-lite<sup>®</sup>2 Green

Product code: QCL2/005

For examining DFO treated fingerprints.

PEAK WAVELENGTH 530nm (nominal)  
10% BAND WIDTH 500-560nm

### Crime-lite<sup>®</sup>2 Orange

Product code: QCL2/006

PEAK WAVELENGTH 590nm (nominal)  
10% BAND WIDTH 570-610nm

### Crime-lite<sup>®</sup>2 Red

Product code: QCL2/007

PEAK WAVELENGTH 625nm (nominal)  
10% BAND WIDTH 600-650nm

### Crime-lite<sup>®</sup>2 White

Product code: QCL2/WHITE (with filters)

Product code: QCL2/WHITE/NF (without filters)

White light for general crime scene search. Available with or without coloured filters. The interchangeable blue, green, and red filters provide contrast enhancement when viewing evidence on coloured backgrounds.

BROAD BANDWIDTH 400 - 700nm (nominal)

# Crime-lite®2 accessories

## Magnifier attachment

Product code: **QCL/05**

- x2 MAGNIFICATION
- 52MM THREAD
- CLIP-ON FITTING



## Step-up ring

Product code: **QCL/108**

- ALLOWS 62mm CAMERA FILTERS TO BE FITTED TO THE MAGNIFIER

## Tripod & Tripod adapter

- TRIPOD FOR FORENSIC PHOTOGRAPHY
- ADAPTER FOR FIXING CRIME-LITE TO TRIPOD

Product code: **QCL/14**

Product code: **QCL/16**



Tripod adapter

## Camera filters & Filter pouch

Long pass glass filters fitted into standard 62mm threaded holders (other sizes available on request).

- PALE YELLOW 435nm
- YELLOW 476nm
- ORANGE 529nm
- ORANGE RED 571nm
- CLEAR (UV FILTER) 408nm

Product code: **QCL/66**

Product code: **QCL/67**

Product code: **QCL/68**

Product code: **QCL2/115**

Product code: **QCL2/118**

Filter pouch with belt loop, shoulder strap and divider for up to 7 camera filters.

- CAMERA FILTER POUCH

Product code: **QCL2/012**



## Polarising filter set

Product code: **QCL/30**

Used with the White Crime-lite to minimise specular reflection.

- 62MM DIAMETER POLARISING FILTER TO FIT CAMERA
- POLARISING VIEWING GLASSES



## Filtered viewing goggles

Goggles fitted with long wavelength pass glass filters.

- PALE YELLOW 435nm
- YELLOW 476nm
- ORANGE 529nm
- ORANGE RED 571nm

Product code: **QCL/16**

Product code: **QCL/17**

Product code: **QCL/18**

Product code: **QCL2/117**



## Laboratory stand

Product code: **QCL/57**

Bench or wall mounted long arm stand, fully adjustable to allow accurate hands-free vertical positioning of Crime-lite.

- BENCH AND WALL MOUNTS ARE INCLUDED
- MAXIMUM REACH OF 2m.
- ADJUSTABLE HEIGHT WITH QUICK RELEASE LEVER
- FULL 360° ROTATION



Bench mount

Wall mount

## Scene of crime cases

Large case holds up to 8 light sources and accessories.

Product code: **QCL2/011**

Small case holds up to 3 light sources and accessories.

Product code: **QCL2/013**

- MACHINED FOAM CUT-OUTS
- WARNING SIGNS FOR CRIME SCENE
- WATERPROOF AND SHOCK RESISTANT



# Crime-lite<sup>®</sup>2 accessories

## Replacement battery

Product code: **QCL/13A**

- TYPE: NICKEL-METAL HYDRIDE, NON-TOXIC
- OUTPUT: 7.2 V, 2.7 AH
- 500 TO 1,000 CHARGE/DISCHARGE CYCLES
- INTERNAL OVERCHARGE PROTECTION CIRCUIT
- COMPATIBLE WITH CRIME-LITE AND CRIME-LITE 2

**NOTE:** The life cycle of this battery will be reduced if it is not charged under optimum conditions. Refer to instruction manual



## Battery charger

Product code: **QCL/06**

- CAPACITY: SINGLE BATTERY SOCKET
- POWER REQUIREMENTS: 110 - 230V, 50 - 60HZ (please specify)
- VEHICLE 12V DC

Battery may be automatically fast charged before switching to trickle charge. LEDs indicate the charging status.

Reverse polarity protection prevents damage to batteries and charger.



## Multi-port battery charger

Product code: **QCL/31**

Capacity to charge up to 10 x 7.2V NiMH Crime-lite batteries at once.

- CHARGE TIME: 150 MINUTES (MAX) PER BATTERY.
- FIXING: WALL OR DESK MOUNTED.
- POWER REQUIREMENTS: 110V - 230V AC, 47 - 63HZ, 1.6A.
- DIMENSIONS: 350mm x 460mm x 90mm
- WEIGHT 3KG

Batteries are automatically fast charged sequentially before switching to trickle charge. LEDs indicate the charge status of each battery.

Reverse polarity protection prevents damage to batteries and charger.



## High-capacity battery & charger



- RECHARGEABLE BATTERY NI-MH, 3.3AH, 24V, ALLOWS **10 - 20 HOURS OPERATION**, DEPENDING ON WAVELENGTH. CHARGE TIME LESS THAN 1 HOUR. WEIGHT 1.5KG.
- BATTERY CHARGER 100V, 60HZ OR 230V, 50HZ (please specify) 23VA, WITH POWER LEAD.

Product code: **QCL/81**

Product code: **QCL/82**

Rechargeable battery shown in charger



## Battery pack adaptor

Product code: **QCL/124**

Allows connection to the high-capacity rechargeable battery pack.

- INPUT: 12 - 24V DC, OUTPUT 8V DC

Connect the Crime-lite to the high-capacity battery (QCL/81) via the connector (QCL/83) or to a vehicle cigarette lighter via lead supplied. The adaptor replaces the standard Crime-lite battery and is fitted with a socket to receive the QCL/83 lead. Extends the continuous use of a Crime-lite to in excess of 10 hours on a fully charged QCL/81 high-capacity battery pack.

## Battery connector & battery holder

- BATTERY CONNECTOR: CONNECTS LARGE BATTERY (QCL/81) TO THE CRIME-LITE ADAPTOR (QCL/124)
- PADDED BATTERY HOLDER POUCH TO HOLD LARGE BATTERY (QCL/81), WITH SHOULDER STRAP

Product code: **QCL/83**

Product code: **QCL/84**



## AC power adaptor

Product code: **QCL/32**

Enables Crime-lite to be operated directly from mains power 110V 60Hz or 230V 50Hz.



foster + freeman

www.fosterfreeman.com

Head Office & UK Sales Office: ☎ +44 (0) 1386 768050  
Foster & Freeman Ltd. ☎ +44 (0) 1386 765351  
Vale Park, Evesham, 🌐 www.fosterfreeman.com  
Worcestershire, WR11 1TD. UK 📧 sales@fosterfreeman.com

USA Sales Office: For enquiries from the USA and Canada  
☎ 888 445 5048 🌐 www.fosterfreeman.com  
☎ 888 445 5049 📧 usoffice@fosterfreeman.com

Appointed Agent:

Foster & Freeman Ltd reserve the right to alter the specification of the **Crime-lite<sup>®</sup>** or any accessories without prior notice.



**WARNING**  
The Crime-lite 2 UV is a Class 3B LED Product.

All other Crime-lites are Class 2M LED Products.