

# Crime-lite<sup>®</sup> 8x4



## A unique LED ring light with 118 modes of illumination

- Seven narrowband light sources from violet to red
- 98 colour mix combinations
- White light with 10 colour temperature settings between 3000° K and 10,000° K
- 10 white light intensity settings at the colour temperature 6500° K
- Battery option for scene-of-crime use

foster+freeman

# Crime-lite® 8x4

## A multi wavelength LED ring light to improve forensic photography

The **Crime-lite 8x4** is designed to meet the the varying demands of forensic photography enabling the operator to create the optimum illumination for all types of evidence and backgrounds, enhancing image contrast and definition.

The ring light is fitted with seven narrow bandwidth LED arrays, emitting light at peak wavelengths of 405, 445, 470, 500, 535, 590 and 625nm. These may be selected individually or in multiple combinations to create 98 different colours, enabling the operator to tailor illumination to suit the evidence. Fixed combinations also provide a choice of 10 white light emissions with a range of colour temperatures between 3000°K and 10,000°K. In addition, an array of standard white light emitting LEDs with a colour temperature of 6500°K have 10 intensity settings.

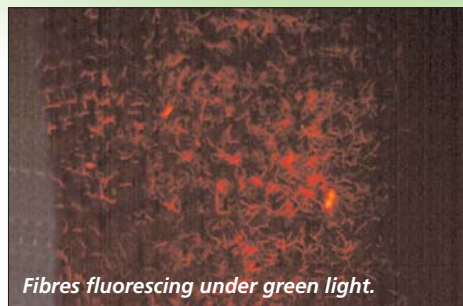
### Other features

- 50nm bandwidths at 10% of peak intensity level.
- White broad band illumination from 400 to 700nm.
- Mounting facilities for laboratory copy stand and scene-of-crime tripod.
- Ready for use with no warm up time.
- Long LED lamp life.
- Bellows for safety shielding.

Accessories include a polarising filter set for enhancing evidence on reflective backgrounds and a rechargeable battery for use at scenes of crime.



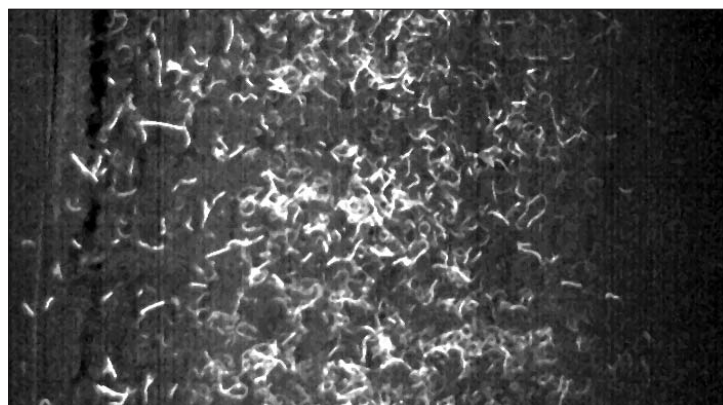
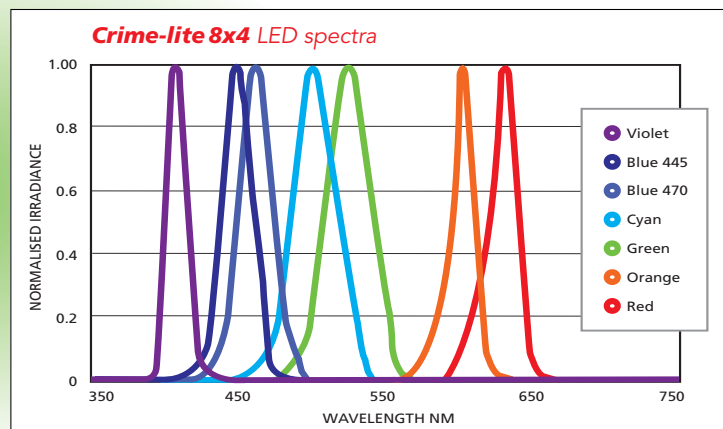
*Fibres viewed under white light.*



*Fibres fluorescing under green light.*

### Fibres

Fluorescent fibres on a red fabric detected with the green light and photographed through 571nm camera filter.



*Fluorescent fibres converted to a black & white image.*

# Specifications and accessories

## Crime-lite®8x4 photographic ring light kit

Product code: **QCL/126x8KIT**

Light source fitted with 32 high intensity LED arrays, configured as a ring light providing even illumination for forensic photography. Features an integral control unit for activating lamps individually or in combination.

LED arrays configured as follows;

**White** emitting LED x 4, bandwidth of 400-700nm, 10 intensity levels, colour

**Violet** emitting LED x 4, peak at 405nm, 10% bandwidth of 390- 430nm

**Blue** emitting LED x 4, peak at 445nm, 10% intensity bandwidth of 430-470nm

**Blue** emitting LED x 4, peak at 470nm, 10% intensity bandwidth of 450-490nm

**Blue/green** emitting LED x 4, peak at 500nm, 10% intensity bandwidth of 470-535nm

**Green** emitting LED x 4, peak at 535nm, 10% intensity bandwidth of 500-560nm

**Orange** emitting LED x 4, peak at 590nm, 10% intensity bandwidth of 580-620nm

**Red** emitting LED x 4, peak at 625nm, 10% intensity bandwidth of 600-650nm

The kit is also supplied with;

- Power adaptor, 90-240vAC input, 24vDC output
- Bellows, to provide safety shielding

Product code: **QCL/80**

Product code: **QCL/127x8**



**WARNING**  
The Crime-lite 8x4 is a  
Class 2M LED Products.

## Ring light inspection filters

Long-pass glass filters suitable for the visual inspection or photography of fluorescent evidence. 70mm diameters, slide mount into Crime-lite8x4;

Pale yellow, 455nm	1% transmission at 435nm
Yellow, 495nm	1% transmission at 476nm
Deep Yellow, 515nm	1% transmission at 495nm
Yellow Orange, 530nm	1% transmission at 510nm
Orange, 550nm	1% transmission at 529nm
Orange Red, 570nm	1% transmission at 549nm
Bright Red, 590nm	1% transmission at 571nm
Red, 610nm	1% transmission at 593nm
Deep Red, 630nm	1% transmission at 613nm

Storage case with a capacity for 12 filters

Product code: **QCL/128x8**

Product code: **QCL/129x8**

Product code: **QCL/130x8**

Product code: **QCL/131x8**

Product code: **QCL/132x8**

Product code: **QCL/133x8**

Product code: **QCL/134x8**

Product code: **QCL/135x8**

Product code: **QCL/136x8**

Product code: **QCL/137x8**



## Polarising filter

Product code: **QCL/139x8**

110mm diameter adjustable polariser with 70mm fixed analyser that fits over the viewing aperture of the Crime-lite8x4, slide mounting.

## Complete ring light inspection filter set

Product code: **QCL/138x8/SET**

Complete set of nine long-pass glass filters and a polarising filter suitable for the visual inspection or photography of fluorescent evidence. 70mm diameters, slide mount into Crime-lite8x4. Includes a storage case with a capacity for 12 filters.

*Photographs are for illustrative purposes only and are not in proportion to each other.*

# Specifications and accessories

## Professional tripod

Product code: **DCS4/TRIPOD**

Reversible head, micro positioning slide plate, variable friction arm, clamp, support shelf and detachable wheeled 'dolly' to move and lock tripod into position. Also includes the 'Crime-lite mount' and the 'Camera mount' for mounting a camera and the Crime-lite8x4.



## Crime-lite adjustable mount assembly

Product code: **QCL/146x8/ASSY**

Allows full adjustment to suit most SLR camera and lens combinations and is also suitable for use with low cost copy stands.

### COMPRISING;

- Tripod Mounting Plate (QCL140x8)
- Adjustable Camera Mount (QCL/141x8)



## Copy stand and column

Product code: **DCS4/STAND**

Free standing Kaiser copy stand.

### COMPRISING;

- Transmitted light base, 430 x 350mm, fitted with four 13 watt daylight, high frequency fluorescent lamps for even illumination
- 1.2m column
- Removable base plate with magnetic bars for holding exhibits

*Incident lighting not included*



## Copy stand mount

Product code: **QCL/144x8/ASSY**

Allows fully independent adjustment of camera and Crime-lite 8x4, suits most SLR camera and lens combinations.

### COMPRISING;

- Modified Kaiser copy stand head with Crime-lite 8x4 base bracket (QCL/143x8)
- Adjustable Crime-lite 8x4 mount (QCL142x8)
- Adjustable camera mount (QCL/141x8)

*Suitable for Kaiser's R1 system of columns only*

QCL/144x8/ASSY

## Crime-lite SOC case

Product code: **QCL/145x8**

Rugged waterproof case with machined foam cut-outs to hold Crime-lite 8x4, mains power unit, portable battery pack filters, adjustable tripod mount assembly QCL/148x8/ASSY.



*Photographs are for illustrative purposes only and are not in proportion to each other.*

## Crime scene battery pack

### ● Rechargeable battery

Ni-MH, 3.3Ah, 24v, gives 50 minutes operation, charge time less than 1 hour, weight 1.5kg.

Product code: **QCL/81**

### ● Battery charger

100-240V 50/60Hz 23VA, with lead

Product code: **QCL/82**

### ● Battery adaptor

Battery to Crime-lite 8x4 connector  
*(not illustrated)*

Product code: **QCL/83**

### ● Battery holder

Padded nylon pouch with shoulder strap

Product code: **QCL/84**

### ● Battery conditioner

Discharges and re-conditions rechargeable batteries *(photo shows in use with the charger and battery)*

Product code: **QCL/95**



*Foster & Freeman Ltd reserve the right to alter the specification of the Crime-lite® or any accessories without prior notice.*

Appointed Agent:

**foster + freeman**

[www.fosterfreeman.com](http://www.fosterfreeman.com)

Head Office & UK Sales Office: ☎ +44 (0) 1386 768050  
Foster & Freeman Ltd. ☎ +44 (0) 1386 765351  
Vale Park, Evesham, 🌐 [www.fosterfreeman.com](http://www.fosterfreeman.com)  
Worcestershire, WR11 1TD. UK 📧 [sales@fosterfreeman.com](mailto:sales@fosterfreeman.com)

USA Sales Office: For enquiries from the USA and Canada  
☎ 888 445 5048 🌐 [www.fosterfreeman.com](http://www.fosterfreeman.com)  
☎ 888 445 5049 📧 [usoffice@fosterfreeman.com](mailto:usoffice@fosterfreeman.com)